

# NEW

TubeInTube – the new double  
sterile barrier packaging

---

Innovative  
packaging for  
implants



**double  
sterile  
barrier**  
protection

**Safety. Speed. Simplicity.**


## The future of im- plant packaging

**Packaging for sterile implants serve three purposes:**

- (1) protect and safeguard the implant's functionality,**
- (2) create a secure and effective sterile barrier and**
- (3) simplify the process and optimize handling in operating rooms.**

That's what our new TubelnTube double sterile packaging system is all about. It allows you to receive your implants already packaged and sterilized, bring them into the operating room – and hand the sterile implant to the doctor without touching it.

Compared to blistered sterile barrier packaging, this allows you to simplify and speed up internal procedures and handling, improves safety, saves storage space, increases product organization efficiency and reduces waste. Learn more about our latest innovation.

 rose plastic worldwide



### **ROSE PLASTIC MEDICAL PACKAGING**

rose plastic medical packaging specializes in medical device packaging for non-sterile and sterile medical devices and accessories like screws, plates and other implants, medical instruments and tools as well as healthcare products. With production sites in Germany, the USA, Brasil, China and India and sales offices globally, the company provides ISO 8 and 9 clean-room quality and reliable service.

### **COLOR-CODING YOUR IMPLANTS**

With colored tamper-evident closure caps for various implant models (e. g. different sizes and diameters of bone screws), you can easily differentiate items for fast visual identification by the users. Additional labels and laser marking can be used to make each of your implants clearly identifiable.





# Maximum protection for your implants

The new air-tight TubeInTube double sterile barrier packaging system makes operating room sterilization obsolete. Save time, storage space and minimize package waste. More importantly, simplify handling in operating rooms.

## OUTER TUBE

Made from clear PETG, the outer tube optimally protects the inner tube and allows clear identification of the implant. The design provides a rolling stop feature so the tube stays in place when placed on a smooth surface.

## OUTER TUBE PLUG

The outer tube plug guarantees air-tight sealing through special sealing rings. An ergonomic handle provides a secure grip and makes it easy to twist open the outer plug. The plug is made of a combination of PE and TPE.

## TAMPER EVIDENT CLOSURE

The outer tube is sealed by a tamper-evident-closure cap made of PE. To open, just pull open the sealing band; it remains attached to the outer tube.

## INNER TUBE

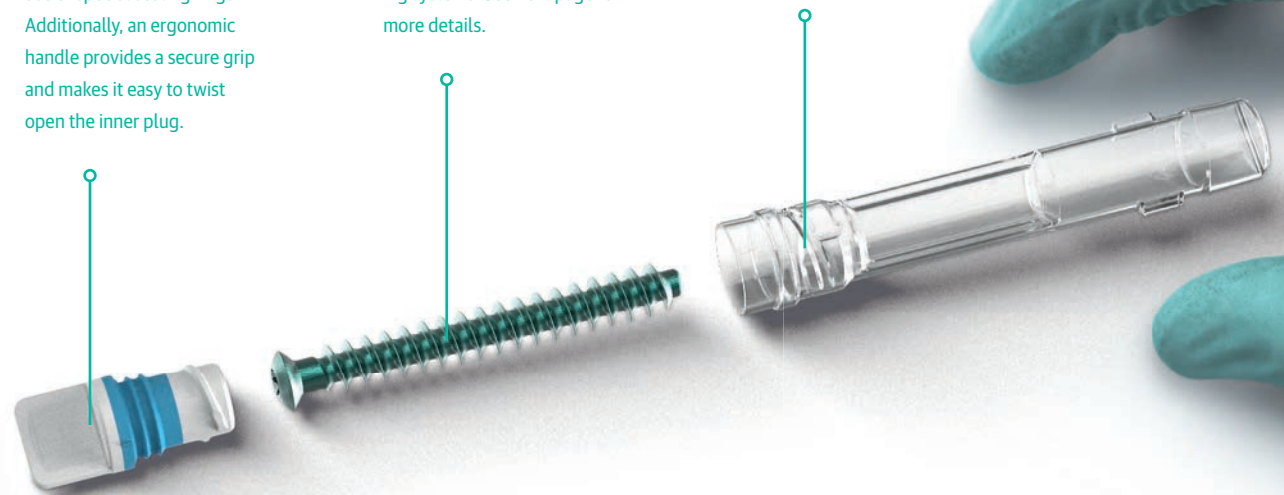
The inner tube holds your implant safely. It is locked into its position by a special feature of the inner tube plug. The special construction of the inner tube plug makes it ideal for bone screws and plates, but also for other implants. There are several variations. More details are provided on the following page.

## IMPLANT

Implants in a range of diameters and lengths can be safely packaged in our TubeInTube double-sterile-barrier packaging systems. See next page for more details.

## INNER TUBE PLUG

The inner tube plug assures air-tight sealing through the use of special sealing rings. Additionally, an ergonomic handle provides a secure grip and makes it easy to twist open the inner plug.

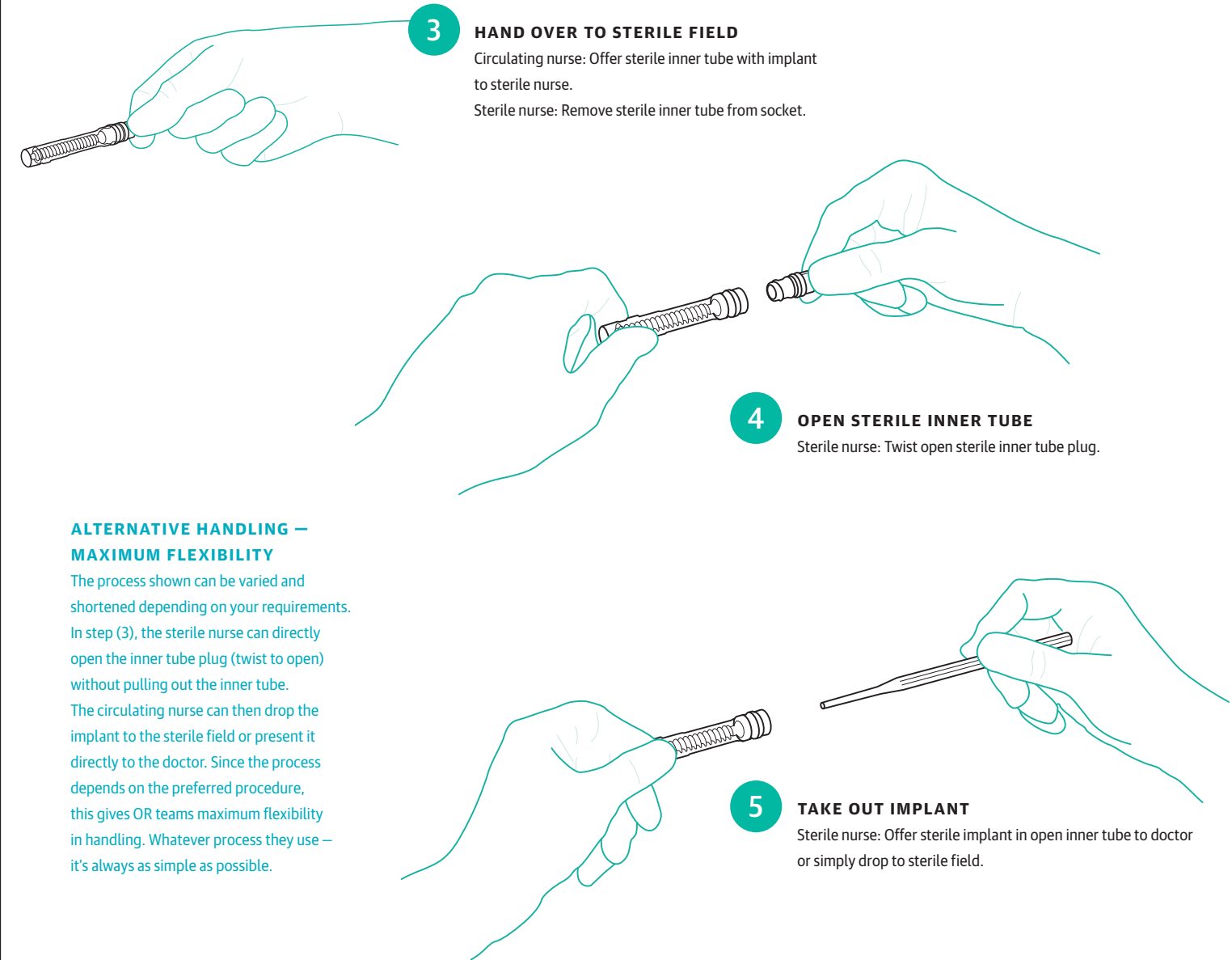
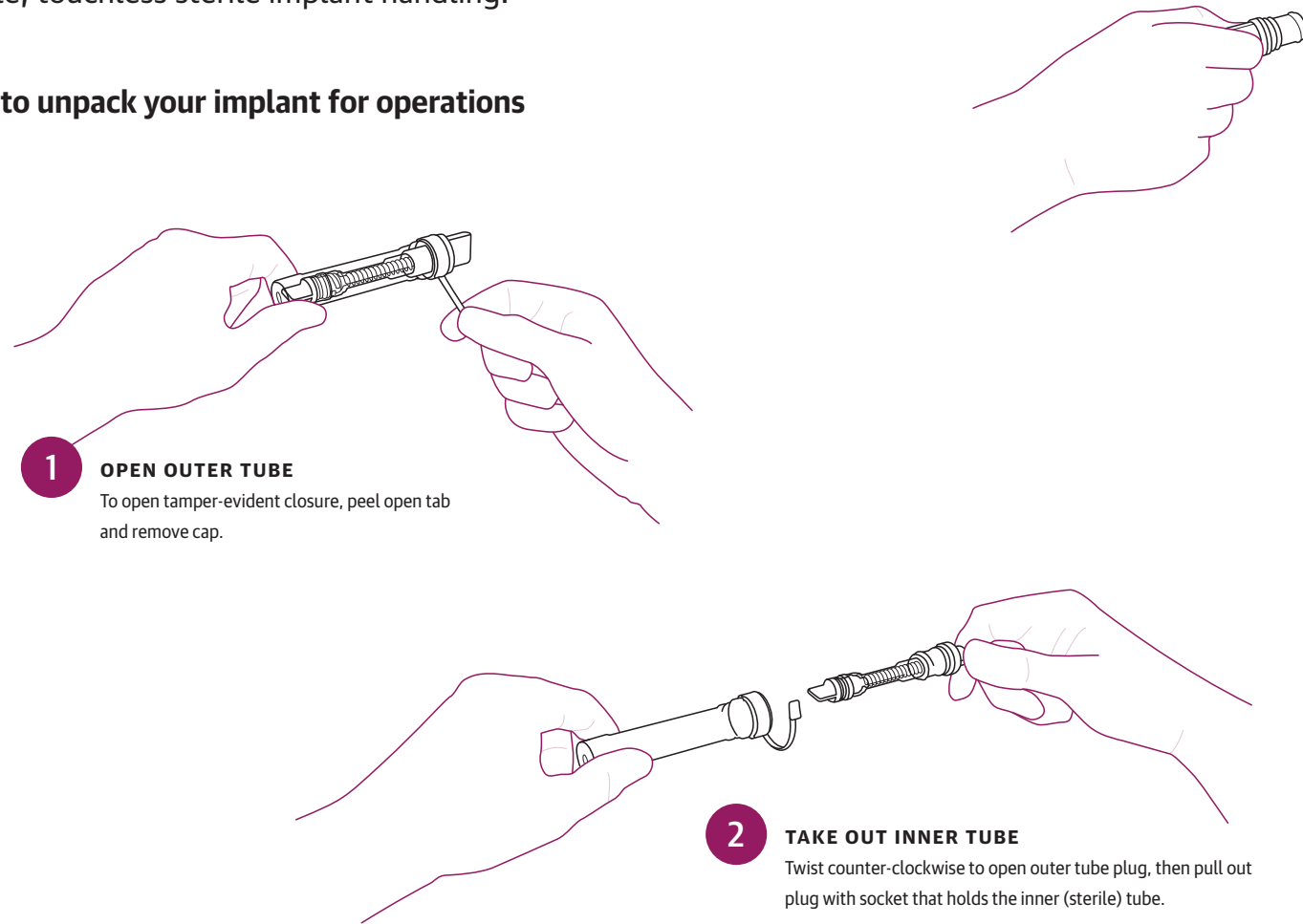


With production sites in Germany, the USA, Brasil, China and India and sales offices globally, rose plastic medical packaging is able to provide reliable service for its customers around the globe.

# TubeInTube

The new, innovative double sterile barrier packaging for simple, touchless sterile implant handling.

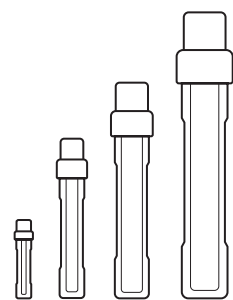
## How to unpack your implant for operations



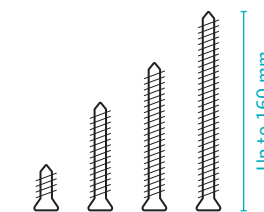
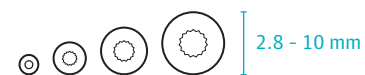
### ALTERNATIVE HANDLING — MAXIMUM FLEXIBILITY

The process shown can be varied and shortened depending on your requirements. In step (3), the sterile nurse can directly open the inner tube plug (twist to open) without pulling out the inner tube. The circulating nurse can then drop the implant to the sterile field or present it directly to the doctor. Since the process depends on the preferred procedure, this gives OR teams maximum flexibility in handling. Whatever process they use – it's always as simple as possible.

## TubeInTube double sterile barrier packaging concept → IMPLANT SIZES



**TUBE SIZES CONCEPT**  
Several TubeInTube sizes fit a wide range of implants in different diameters and lengths.



**BONE SCREW SIZES**  
TubeInTube are suitable for bone screws with thread diameters from 2 to 8 mm (screw head diameters from 2.8 to 10 mm) and in lengths up to 160 mm.

## TubeInTube product range All dimensions in millimeters (mm)

TubeInTube	Inner tube Ø	Outer tube Ø	Overall length	Screw thread Ø min.-max.	Screw length max.
10 040	10	16	97	2.0, 2.5, 3.0, 3.5	40
10 080	10	16	137	4.0, 5.0, 6.0	80
10 160	10	16	217	7.0, 8.0	160



TubeInTube is already available in a range of sizes for implants in various lengths and diameters. Please inquire with your specific requirements



03/2019

**GERMANY**

**rose plastic  
medical packaging GmbH**

Rupolzer Straße 30  
88138 Hergensweiler/Lindau  
Tel. +49 8388 923 45-0  
Fax +49 8388 92345-150  
info@rose-medipack.com

**USA**

**rose plastic  
medical packaging USA, L.L.L.P.**

PO Box 210  
California, PA 15419  
Tel. +1 724 938 8530  
Fax +1 724 938 8532  
info@rose-medipack.us

[www.rose-medipack.com](http://www.rose-medipack.com)

rose  plastic®  
medical packaging